



Nigeria Centre for Disease Control

Protecting the health of Nigerians

www.ncdc.gov.ng

PLOT 801 EBITU UKIWE STREET, JABI ABUJA, NIGERIA.
TOLL FREE CALL: 6232. Email: info@ncdc.gov.ng

@NCDCgov

Cholera Situation Report

WEEKLY EPIDEMIOLOGICAL REPORT 26

Epidemiological week 49: (06 December to 12 December 2021)

Key Points

Table 1: Summary of current week (Epi week 49 ,2021)

Suspected Cases	Deaths (Suspected cases)	Case Fatality Ratio (%)	States Reporting Cases	LGAs Reporting cases
63	0	0.0%	10	16

Table 2: Cumulative summary from Epi week 1 - 49,2021

Suspected Cases	Deaths (Suspected cases)	Case Fatality Ratio (%)	States Reporting Cases	LGAs Reporting cases
107,911	3,598	3.3%	33	418

Week 49 Highlights

- Thirty-two states and FCT have reported suspected cholera cases in 2021. These are Abia, Adamawa, Bauchi, Bayelsa, Benue, Borno, Cross River, Delta, Ebonyi, Ekiti, Enugu, FCT, Gombe, Jigawa, Kaduna, Kano, Katsina, Kebbi, Kogi, Kwara, Lagos, Nasarawa, Niger, Ogun, Ondo, Osun, Oyo, Plateau, Sokoto, Taraba, Yobe, Rivers and Zamfara
- In the reporting week, 10 states reported **63** suspected cases - Nasarawa (21), Benue (8), Rivers (8), Bauchi (7), Bayelsa (5), Ondo (4), Katsina (3), Lagos (3), Gombe (2) and Zamfara (2)
- There was **69% decrease in the number of new suspected cases** in week 49 (63) compared with week 48 (201)
- Nasarawa (21), Benue (8) and Rivers (8) account for 59% of 63 suspected cases reported in week 49
- During the reporting week, 8 Cholera Rapid Diagnostic Test (RDT) was conducted. RDT conducted were from Benue (3), Ondo (3) and Nasarawa (2). Of this, a total of 2 (25%) were positive
- 4 stool culture was conducted. Stool culture conducted were from Benue (3) and Nasarawa (1). All 4 (0%) were negative.
- Of the cases reported, there were zero death from ten states reporting with a weekly case fatality ratio (CFR) of 0.0%
- No new state reported cases in week 49
- The national multi-sectoral EOC activated at level 02 continues to coordinate the national response

Cumulative Epi-Summary

- As of 12th December 2021, a total of 107,911 suspected cases including 3,598 deaths (CFR 3.3%) have been reported from 32 states and FCT in 2021
- Of the suspected cases since the beginning of the year, **age group 5 - 14 years** is the most affected age group for male and female
- Of all suspected cases, **50% are males and 50% are females**
- Four states - Bauchi (19,558 cases), Jigawa (15,141 cases) Kano (12,116 cases), and Zamfara (11,931 cases) account for 54% of all cumulative cases
- Twelve LGAs across five states Bauchi (4), Zamfara (4), Jigawa (2), Kano (1) and Katsina (1) have reported more than 1,000 cases each this year

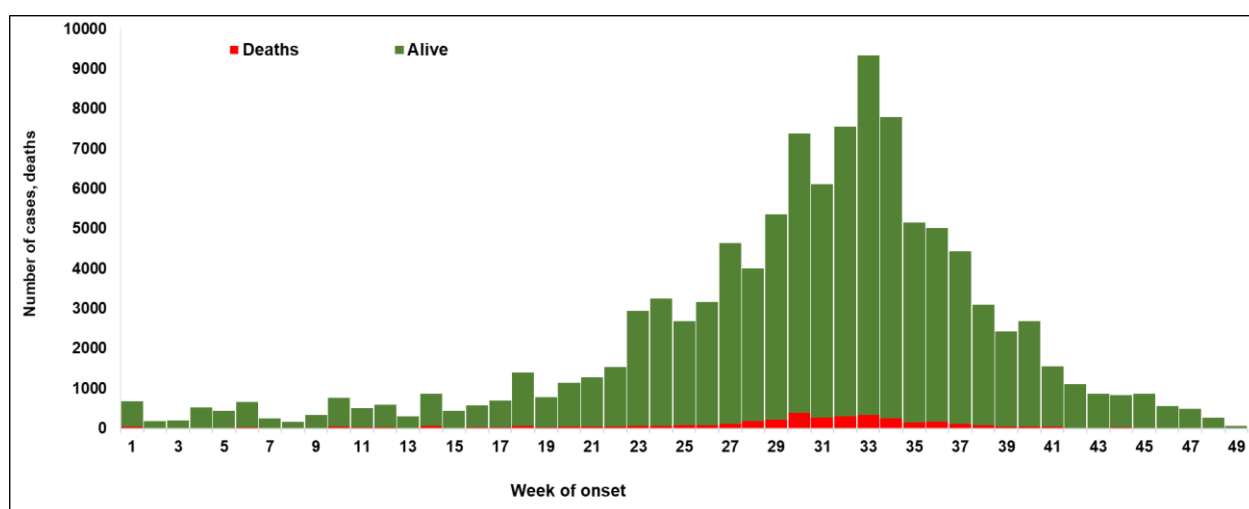


Figure 1: National Epidemic curve of weekly reported Cholera cases, week 1 to week 49, 2021

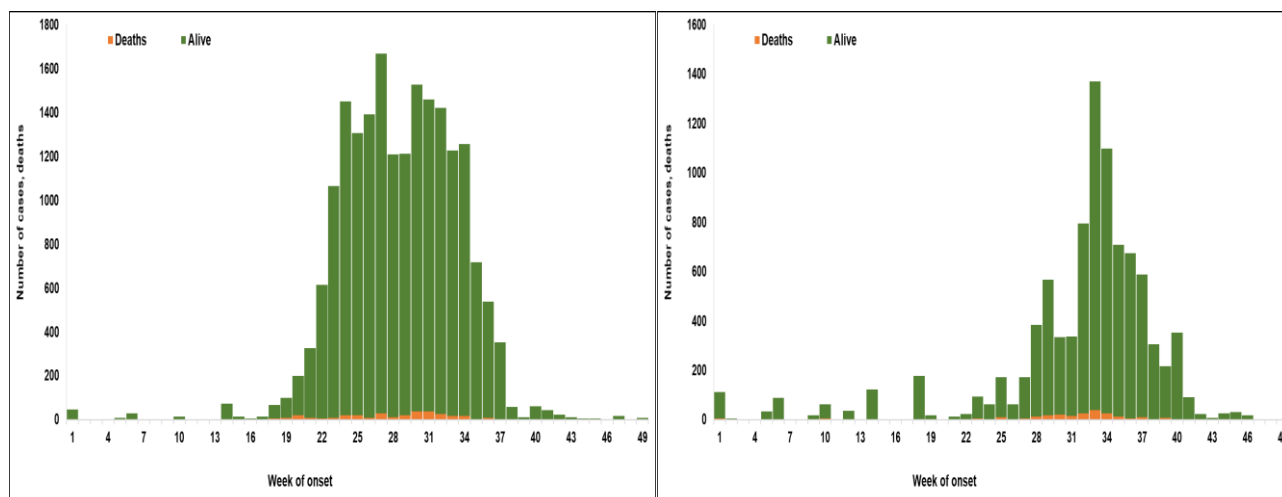


Fig 2: Bauchi epidemic curve, week 1 to week 49, 2021

Fig 3: Katsina epidemic curve, week 1 to week 49, 2021

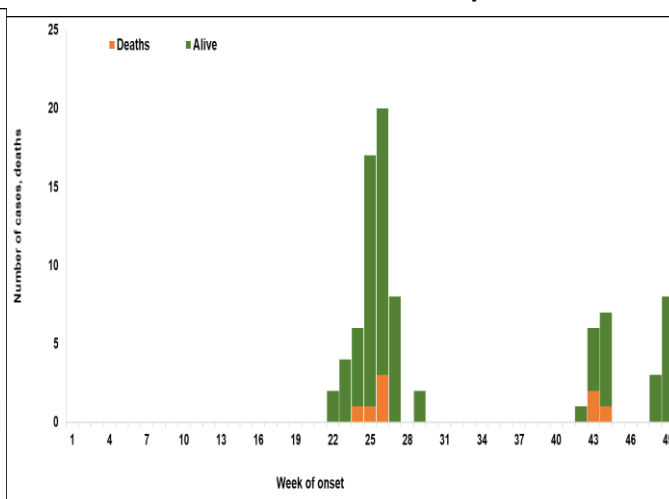
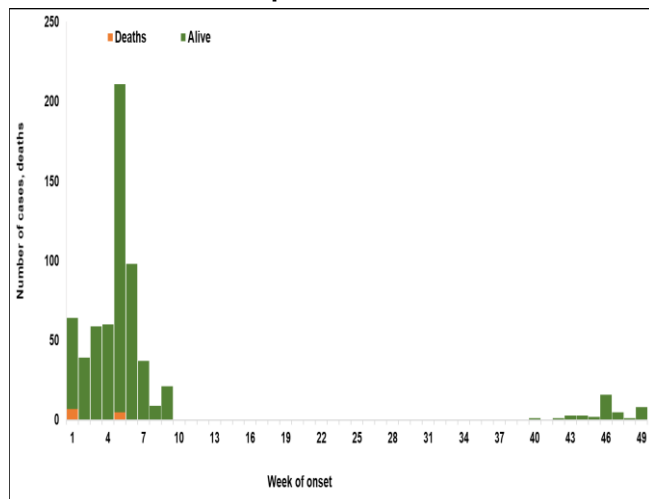


Fig 4: Benue epidemic curve, week 1 to week 49, 2021

Fig 5: Rivers epidemic curve, week 1 to week 49, 2021

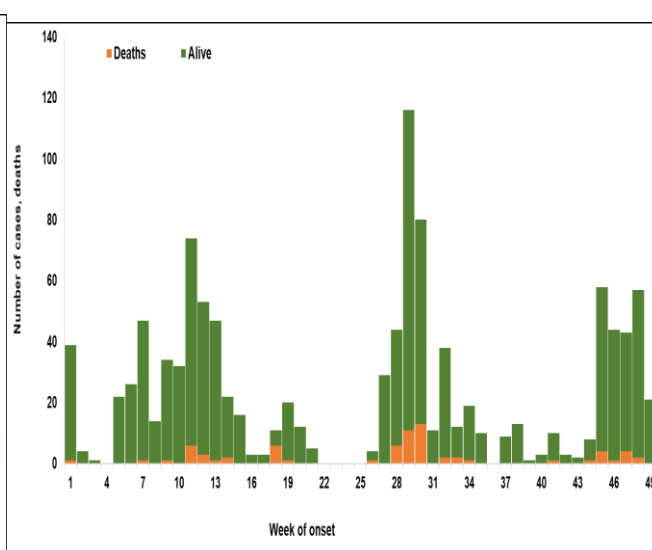
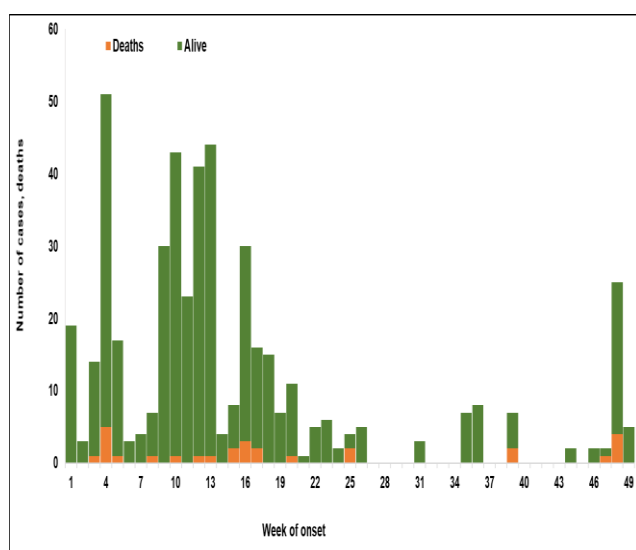


Fig 6: Bayelsa epidemic curve, week 1 to week 49, 2021

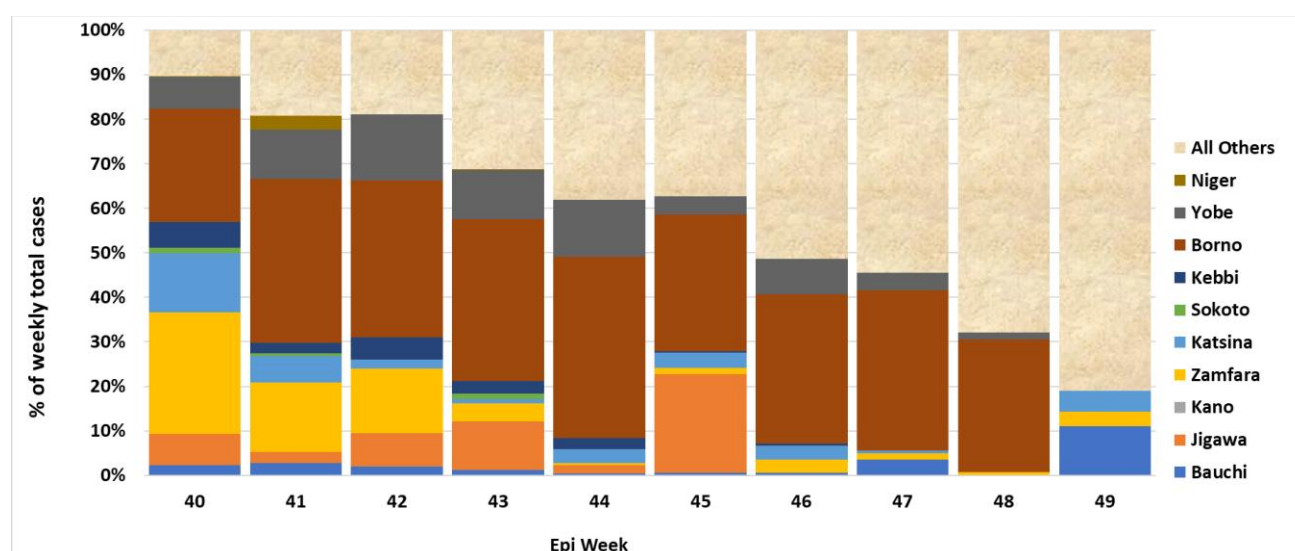
Fig 7: Nasarawa epidemic curve, week 1 to week 49, 2021

Table 3: Top 10 states in cumulative cases

No	State	Cases	Percent of cumulative cases	Cumulative % of total cases
1	Bauchi	19,558	18%	18%
2	Jigawa	15,141	14%	32%
3	Kano	12,116	11%	43%
4	Zamfara	11,931	11%	54%
5	Katsina	9,209	9%	63%
6	Sokoto	8,477	8%	71%
7	Kebbi	5,949	6%	76%
8	Borno	5,206	5%	81%
9	Yobe	4,002	4%	85%
10	Niger	2,821	3%	87%
Total		94410	87%	

Table 4: Top 15 Local Government Areas (LGAs) in cumulative cases

No	LGA	State	Cases	% of cumulative cases	Cumulative %
1	Bauchi	Bauchi	9336	9%	9%
2	Zurmi	Zamfara	2889	3%	11%
3	Anka	Zamfara	2637	2%	14%
4	Shinkafi	Zamfara	2342	2%	16%
5	Funtua	Katsina	2046	2%	18%
6	Gusau	Zamfara	2012	2%	20%
7	Sumaila	Kano	1923	2%	21%
8	Toro	Bauchi	1921	2%	23%
9	Ganjuwa	Bauchi	1311	1%	24%
10	Tafawa Balewa	Bauchi	1107	1%	26%
11	Gwadabawa	Sokoto	969	1%	26%
12	Dange-Shuni	Sokoto	958	1%	27%
13	Damaturu	Yobe	896	1%	28%
14	Ningi	Bauchi	860	1%	29%
15	Bichi	Kano	837	1%	30%
Total			32044	30%	

**Figure 8: Percentage contribution of weekly cases by state in recent 10 weeks, week 40 - 49, 2021**

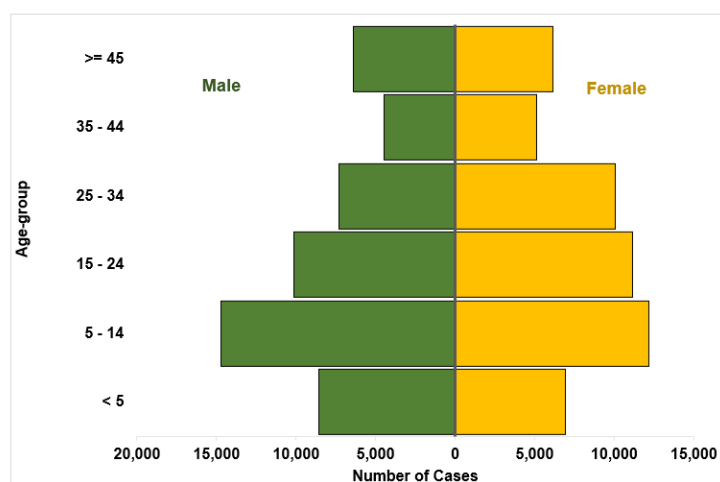


Figure 9. Age-Sex Pyramid for cumulative Cholera Cases, week 1-49, 2021: N=107,337

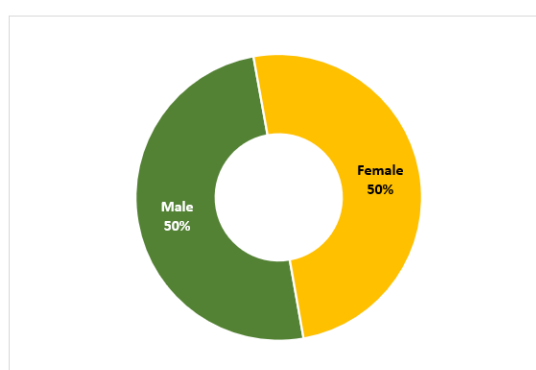


Figure 10. Sex disaggregation for cumulative Cholera cases, week 1-49, 2021: N=107,337

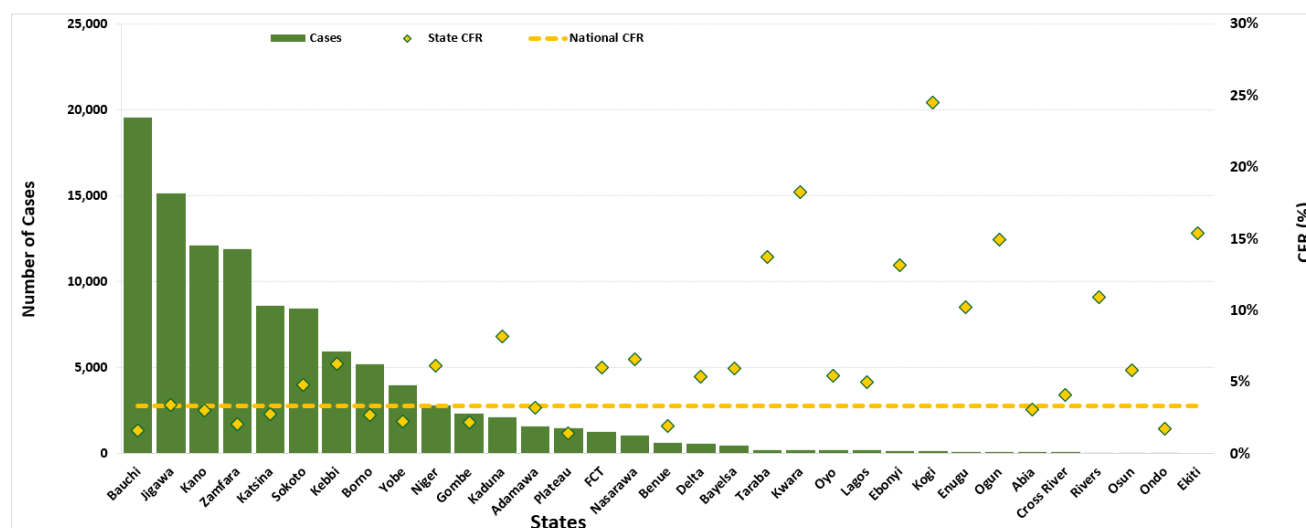


Figure 11: Number of cumulative cholera cases with case fatality ratio (CFR) by state, week 1 - 49, 2021

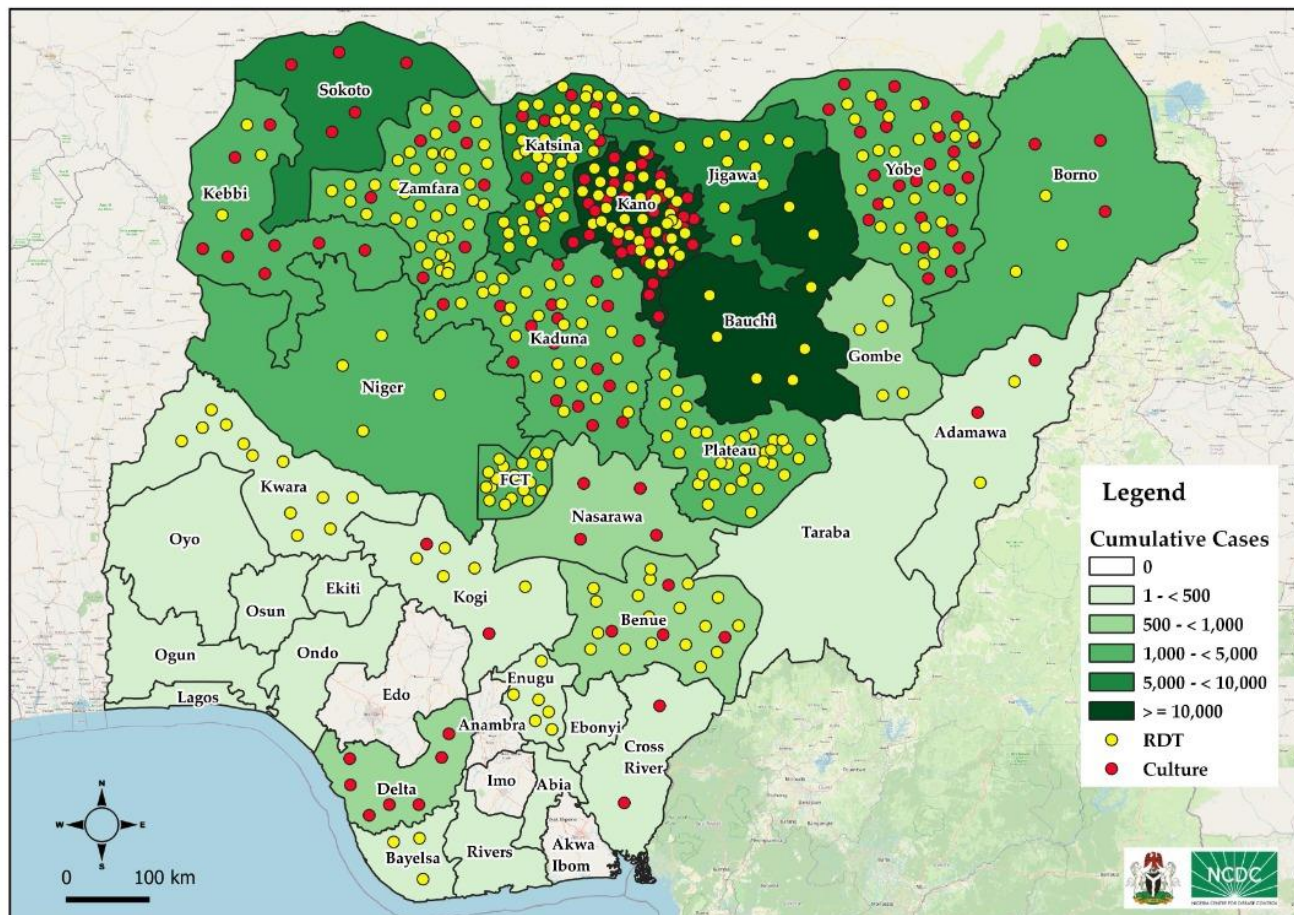


Figure 12. Map of Nigeria showing states with RDT + Culture confirmation and suspected cases, week 1 - 49, 2021

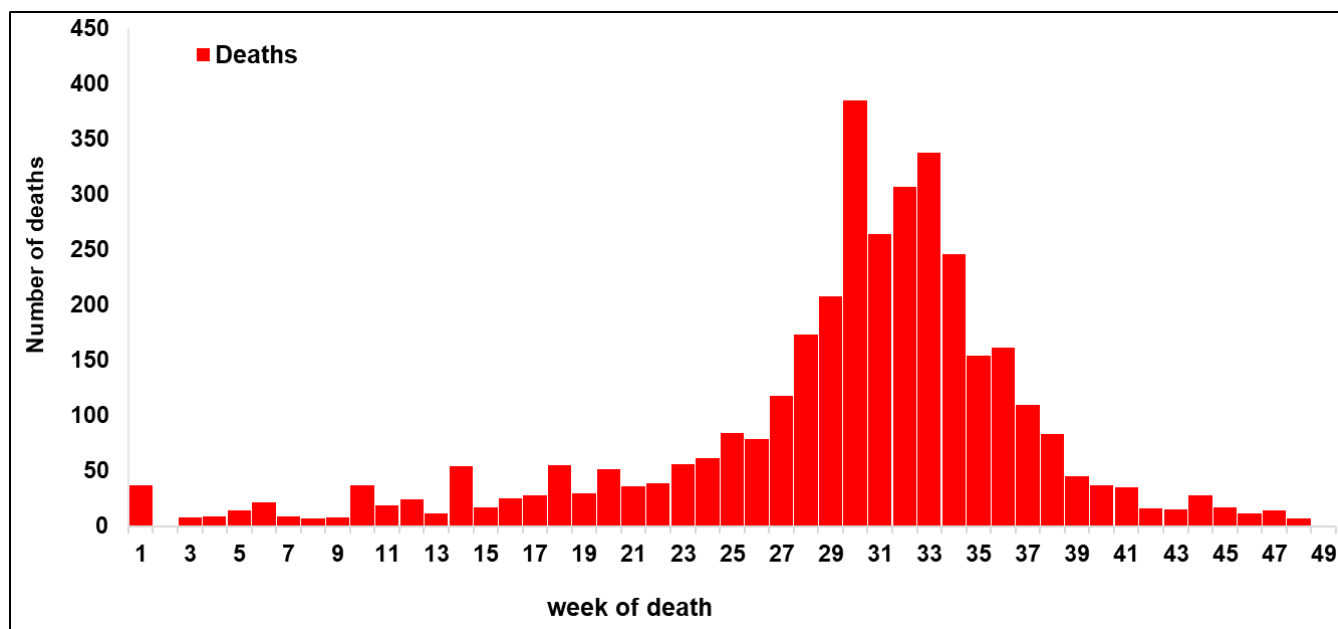


Figure 13: Trends in Deaths, week 1 - 49, 2021, Nigeria

Table 5. Summary table for Weekly & Cumulative number of Cholera Cases, for 2021

	States Reporting cases in 2021	State outbreak status*	Current week: (Week 49)						Cumulative (Week 1 - 49)				
			Cases		Deaths		Tests		Cases	Deaths	CFR	Tests	
			Cases	% change	Deaths	% change	RDT (%Pos)	Culture (%pos)				RDT (%Pos)	Culture (%pos)
1	Bauchi	Active	7	▲ 100%					19,558	320	1.6%	152 (67%)	25 (100%)
2	Jigawa								15,141	517	3.4%	507 (2%)	
3	Kano								12,116	368	3.0%	21 (95%)	21 (81%)
4	Zamfara	Active	2						11,931	244	2.0%	147 (67%)	100 (74%)
5	Katsina	Active	3	▲ 100%					9,209	238	2.6%	222 (23%)	139 (12%)
6	Sokoto								8,477	410	4.8%		5 (80%)
7	Kebbi								5,949	374	6.3%	69 (65%)	25 (72%)
8	Borno	Active		▼ 100%					5,206	141	2.7%	1687 (9%)	706 (10%)
9	Yobe	Active		▼ 100%					4,002	91	2.3%	167 (52%)	89 (90%)
10	Niger								2,821	174	6.2%	79 (61%)	
11	Gombe	Active	2	▼ 93%		▼ 100%			2,334	51	2.2%	294 (84%)	5 (60%)
12	Kaduna								2,132	175	8.2%	190 (53%)	15 (87%)
13	Adamawa	Active		▼ 100%					1,591	51	3.2%	255 (64%)	96 (65%)
14	Plateau								1,490	21	1.4%	76 (43%)	5 (0%)
15	FCT								1,286	77	6.0%	29 (72%)	
16	Nasarawa	Active	21	▼ 63%		▼ 100%	2 (50%)	1 (0%)	1,120	71	6.3%	18 (94%)	32 (75%)
17	Benue	Active	8	▲ 700%			3 (33%)	3 (0%)	638	12	1.9%	33 (64%)	7 (57%)
18	Delta								578	31	5.4%		5 (40%)
19	Bayelsa	Active	5	▼ 80%		▼ 100%			474	28	5.9%	8 (75%)	6 (0%)
20	Taraba	Active		▼ 100%					218	30	13.8%	30 (50%)	
21	Lagos	Active	3	▼ 57%					211	10	4.7%		192 (5%)
22	Kwara								208	38	18.3%	137 (12%)	
23	Oyo	Active							201	11	5.5%	14 (50%)	1 (100%)
24	Ebonyi								175	23	13.1%	3 (100%)	
25	Kogi								151	37	24.5%	9 (78%)	8 (50%)
26	Enugu								127	13	10.2%	7 (100%)	
27	Ogun	Active							107	16	15.0%	46 (63%)	
28	Cross River	Active		▼ 100%					101	6	5.9%	4 (75%)	6 (33%)
29	Abia								98	3	3.1%	5 (40%)	5 (40%)
30	Rivers	Active	8	▲ 167%					84	8	9.5%		
31	Ondo	Active	4	▼ 76%			3 (0%)		82	1	1.2%	20 (5%)	2 (50%)
32	Osun	Active		▼ 100%					69	4	5.8%	5 (20%)	3 (0%)
33	Ekiti								26	4	15.4%	5 (80%)	8 (25%)
	National	18	63	▼ 76%	0	▼ 100%	8 (25%)	4 (0%)	107,911	3,598	3.3%	4239 (31%)	1506 (29%)

Table 6: Response activities

Pillar	Activities to date	Next steps
Coordination	<ul style="list-style-type: none"> • Response is being coordinated by the national multi-sectoral EOC hosted at NCDC, in collaboration with Federal Ministry of Health (FMOH), Federal Ministry of Water Resources (FMWR), Federal Ministry of Environment (FMEvrt), and partners • National Rapid Response Teams (RRTs) with response commodities deployed by NCDC to support the response in sixteen states - Benue, Kano, Kaduna, Zamfara, Bauchi, Plateau, Jigawa, Katsina, Niger, Gombe, Sokoto, Kebbi, Oyo, Yobe, Adamawa, Borno, Ogun, Cross River and the FCT • Conducted zonal level trainings on cholera detection, reporting and case management 	<ul style="list-style-type: none"> • The national multi-sectoral EOC activated at level 02 continues to coordinate the national response • Continue sub-national level trainings on cholera detection, reporting and case management • Planned de-activation of the 2021 national cholera EOC • Planned After Action Review (AAR)
Surveillance	<ul style="list-style-type: none"> • Ongoing surveillance in all states through the routine Integrated Disease Surveillance and Response (IDSR) and Event Based Surveillance (EBS) • Providing offsite/onsite support to states and follow up for daily reporting and progress with response activities 	<ul style="list-style-type: none"> • Continue data collation and harmonisation • Continue zonal level trainings on data analysis
Case Management & IPC	<ul style="list-style-type: none"> • Provided technical support and response commodities to affected states • Conducted workshop on cholera case management guideline, treatment protocol and SOP harmonization 	<ul style="list-style-type: none"> • Continue providing technical support on case management and IPC to states • Continue training of Health Care Workers (HCW) on management of cholera • Continuous follow up with states for updates and support
Laboratory	<ul style="list-style-type: none"> • Supported testing of samples received from Benue, Niger, Plateau, Bauchi, Jigawa, Kaduna, Kano, Kwara, Katsina, Enugu, Bayelsa, Adamawa, Nasarawa, Gombe, Yobe, Borno, Oyo, Kebbi, Sokoto, Ebonyi, Abia, Taraba, Ondo and FCT at NCDC National Reference Laboratory (NRL), Abuja • Ongoing testing across state-level laboratories 	<ul style="list-style-type: none"> • Planned sub-national level training of Laboratory Scientists on sample collection and analysis
WASH	<ul style="list-style-type: none"> • Hygiene promotion, provision of safe water, water chlorination, household disinfection and sensitisation on dangers of open defecation ongoing in high-risk communities by WASH sector partners and Community Health Volunteers in the affected states 	<ul style="list-style-type: none"> • Continue distribution of hygiene kits to affected states

	<ul style="list-style-type: none"> Continuous construction of sanitation and hygiene facilities with boreholes in cholera hotspots 	
Logistics	<ul style="list-style-type: none"> Essential response commodities are being distributed to all cholera affected states 	<ul style="list-style-type: none"> Continue supporting affected states with essential response commodities
Vaccination (led by NPHCDA)	<ul style="list-style-type: none"> Epidemiological trend is being monitored to guide ICG request for planned vaccination campaigns Reactive OCV campaigns were conducted in March at Agatu LGA, Benue State; July at Bauchi LGA, Bauchi State; October at Dutse, Birnin-Kudu and Hadejia LGAs of Jigawa state, Damaturu LGA of Yobe state 	<ul style="list-style-type: none"> Continue monitoring epidemiological trend to guide ICG request for planned vaccination campaigns Planned OCV campaigns in: Zamfara State (LGAs: Shinkafi, Zurmi)
Risk communication	<ul style="list-style-type: none"> Cholera jingles are being aired in English and local languages Community social mobilisation, media interviews, distribution of Information, Education and Communication (IEC) materials and awareness campaigns ongoing in affected communities Conducted Ministerial press briefings 	<ul style="list-style-type: none"> Continue airing of cholera jingles and distribution of IEC materials Continue media engagement meetings and training of journalist, other media professionals Continued follow-up with states for update on risk communication
State Response	Multi-sectoral State-level EOCs currently activated in Zamfara, Kaduna, Bauchi, Plateau, Kano, Enugu, Jigawa, Niger, Gombe, Sokoto, Katsina, Adamawa, Borno, Oyo, Lagos, Kebbi, Yobe, Ogun, Cross River, Taraba, Bayelsa, Ondo and the FCT	Continue supporting state response activities

Challenges

- Difficulty in accessing some communities due to security concerns
- Open defecation in affected communities
- Lack of potable drinking water in some rural areas and urban slums
- Inadequate vaccines to cover all LGAs, wards and settlements with cholera outbreaks
- Inadequate health facility infrastructure and cholera commodities for management of patients (Ringer's lactate and ORS)
- Inadequate trained personnel in states for case management
- Poor and inconsistent reporting from states

Next Steps

- Conduct training on cholera surveillance, hotspot mapping and develop state level preparedness and response plans
- Maintain communication with and support to states for data reporting and response
- Conduct OCV campaigns in Zamfara State
- Develop and submit cholera vaccination request to International Coordinating Group (ICG) and the Global Task Force for Cholera Control (GTFCC) for reactive and preventive cholera campaign with NPHCDA
- Continue advocacy to State Governments to increase funding in WASH infrastructure
- Pre-position response commodities across states
- Build capacity for sample collection, transportation and laboratory diagnosis
- Planned deployment of RRTs to more affected states
- Planned After Action Review (AAR)
- Scale up risk communications

Notes on this report

Data Source

Information for this disease was case based data retrieved from the National Cholera Emergency Operations Centre.

Case definitions

Suspected Case:

- Any patient aged ≥ 2 years with acute watery diarrhoea and severe dehydration or dying from acute watery diarrhoea with or without vomiting
- In areas where a Cholera outbreak is declared, any person presenting with or dying from acute watery diarrhoea with or without vomiting

Confirmed Case: A suspected case in which *Vibrio cholerae* O1 or O139 has been isolated in the stool by culture

DATA AS REPORTED AND ACCURATE BY NCDC AS AT MIDNIGHT 12th DECEMBER 2021